

## INSIDE THIS ISSUE

**POWER  
PARTNERS  
KEEP ENERGY  
FLOWING**  
PAGE 2

**CVEC FIBER  
BUILDOUT  
UPDATE**  
PAGE 3

**WAYS  
TO HELP  
LIMIT TREE  
TRIMMING---**  
PAGE 4

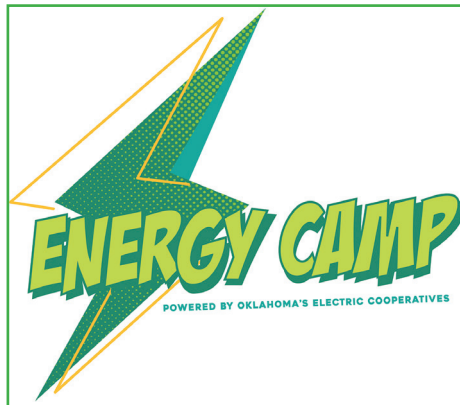
# CANADIAN VALLEY ELECTRALITE

## Empowering Minds: The Energy Camp Experience with Canadian Valley Electric

A unique opportunity awaits young minds with a curiosity for energy and a passion for learning. Energy Camp, organized through the Oklahoma Association of Electric Cooperatives (OAEC), offers an enriching experience for participants, providing insights into the world of electricity. Current 8th graders in and around CVEC's territory have the chance to win an all-expense paid trip through the Canadian Valley Electric Cooperative's 3-5 minute video contest.

Energy Camp, hosted by OAEC, has been a beacon for young learners eager to explore the fascinating realm of energy production, distribution, and consumption. The camp aims to educate and inspire the next generation of leaders in the energy sector, fostering a deep understanding of the importance of electricity in our daily lives.

To enter the contest, aspiring participants must pair with another 8th grader to record and submit their 3-5-minute video over "How Does Electricity Impact Your Everyday Life?" to encourage cooperation and participation. All videos must be submitted by April 5, 2024. This deadline adds a sense of urgency and excitement to the challenge, creating a buzz among young filmmakers and storytellers eager to showcase their unique perspectives on the significance of electricity.



Winning the contest means more than just a trophy or recognition; it means earning a trip to Energy Camp, where participants will have the opportunity to interact with industry professionals, engage in hands-on activities, meet other students from across Oklahoma, and gain a comprehensive understanding of the energy and cooperative landscape. This immersive experience promises to be a catalyst for future careers in

the energy sector, igniting a passion for sustainable and responsible energy practices.

As the deadline approaches, participants are encouraged to unleash their creativity, exploring the many ways electricity impacts their lives. Whether it's powering homes, driving technological advancements, or fueling innovation, the Energy Camp video contest is a platform for young minds to express their thoughts and ideas about the transformative force that is electricity. With the promise of a thrilling camp experience and the potential for a life-changing adventure, Energy Camp is an opportunity not to be missed for aspiring young minds!

Be sure to visit our website for contest rules and information at <https://www.mycvec.coop/youth-programs>.



A Message from

**Canadian Valley Electric CEO**

*Gary Highley*

In the face of extreme weather, have you ever pondered the invisible network that ensures your lights stay on and your appliances keep running? Canadian Valley Electric Cooperative relies on a powerhouse of interconnected organizations to weather the storm, both figuratively and literally. Let's unravel the connections that keep the energy flowing even during the toughest conditions.

At the core of this network is the Southwest Power Pool (SPP), an organization playing a pivotal role in overseeing power grids across the central United States. When extreme weather strikes, SPP steps in to ensure the seamless operation of these grids, maintaining a stable energy supply. It acts as a guardian, preventing disruptions and safeguarding communities from the impact of power outages.

One essential link in this chain is the Western Farmers Electric Cooperative (WFEC). As the force behind electricity generation and transmission, WFEC powers CVEC, providing the energy needed to keep homes and businesses illuminated. It functions as the backbone of the system, ensuring a steady flow of electricity even in the face of challenging weather conditions.

But how does it all come together for CVEC? WFEC, serving as the generation and transmission cooperative, forms the key link in this intricate chain. It supplies CVEC with the electricity necessary for distribution to members, thereby ensuring reliability and resilience during extreme weather events.

In essence, it's a collaborative effort. SPP, WFEC, and CVEC work hand in hand to keep the community energized, especially when Mother Nature unleashes her toughest challenges. The synergy between these organizations exemplifies the spirit of powering progress together, emphasizing the importance of a united front in maintaining a constant and reliable energy supply.

So, the next time you turn on your lights during a storm, remember the unseen, but robust, connections that make it possible. Stay informed, stay powered!



## Canadian Valley Electric Cooperative

11277 N. Hwy. 99, Seminole, OK 74868  
35 W. JC Watts Ave. Eufaula, OK 74432  
(405) 382-3680

Website: [www.mycvec.coop](http://www.mycvec.coop)



### Business Hours

Seminole Office -

8:00 a.m. - 5:00 p.m., Monday - Friday

Eufaula Office -

8:00 a.m. - 4:30 p.m., Monday - Friday

Seminole Warehouse -

7:00 a.m. - 3:30 p.m., Monday - Friday

### Board of Trustees

Joe Semtner - District 6

*President*

Yates Adcock - District 8

*Vice-President*

Robert Schoenecke - District 2

*Secretary*

Jesse Snyder - District 3

*Treasurer*

Steve Marak - District 1

Clayton Eads - District 4

J.P. Duvall - District 7

Matt Goodson - District 5

Gary Highley

*Chief Executive Officer*

### Did You Know?

Electric cooperatives **scored higher in customer satisfaction** than any investor-owned utility, according to J.D. Power 2022 survey data.



*Improve Life,  
Serve Community*

# CVEC Fiber Buildout Update

## Phase 2 Successfully Completed, Transforming Connectivity in Our Community

In an age where high-speed internet connectivity is as vital as any utility service, CVEC Fiber continues to make strides towards its goal of connecting rural communities to fast and reliable fiber internet access. CVEC Fiber is proud to announce the successful completion of Phase 2 of its Fiber Buildout project, marking a significant stride towards revolutionizing connectivity in our community.

### *Connecting Communities: A Vision Realized*

CVEC Fiber's initiative is a testament to the cooperative's commitment to bridging the digital divide and empowering local residents with cutting-edge technology. With Phase 2 now complete, numerous households and businesses within their service area are poised to experience the benefits of robust, high-speed internet.

"Our mission has always been to enhance the quality of life for our members, and providing access to fast and reliable internet is a crucial component of that commitment," says Sheila Allgood, General Manager, CVEC Fiber.

### *Highlights of Phase 2 Completion:*

**Expanded Coverage:** With each phase, CVEC Fiber has expanded its coverage, reaching previously underserved areas. Phase 2 has seen a remarkable increase in the number of homes and businesses

now within the reach of CVEC's high-speed internet infrastructure.

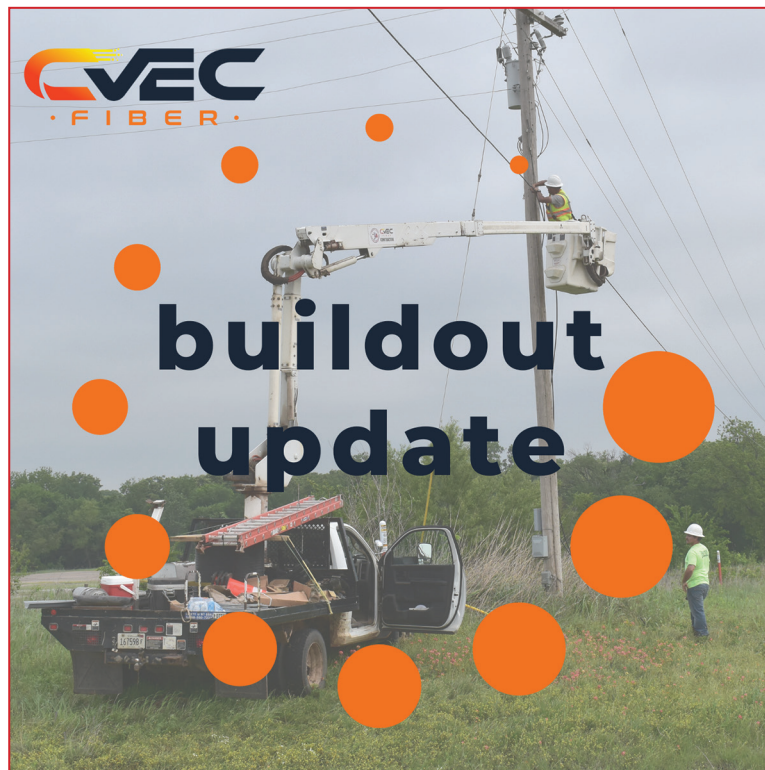
**Enhanced Speeds:** Residents and businesses can now enjoy enhanced internet speeds, enabling smoother online experiences, whether for remote work, virtual learning, or entertainment.

**Reliability:** The completion of Phase 2 brings with it increased network resilience. CVEC Fiber is designed to provide reliable connectivity even in

challenging weather conditions, ensuring uninterrupted service for their customers.

As CVEC Fiber expands its network, residents can anticipate a seamless transition to faster, more reliable internet access. The fiber-to-the-home buildout plan is a clear testament to CVEC Fiber's dedication to narrowing the digital divide, one home at a time, that promises to Improve Life and Serve Community. For residents eager to experience

the benefits of CVEC Fiber, the cooperative encourages reaching out to their customer service team at 405-382-3680 or visiting [cvecfiber.com](http://cvecfiber.com) for information on availability, packages, and pricing. As CVEC Fiber continues to bring high-speed internet to the doorsteps of rural residents, the future of rural Oklahoma is indeed looking brighter.

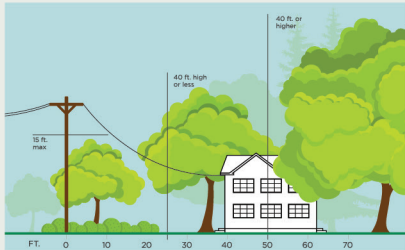




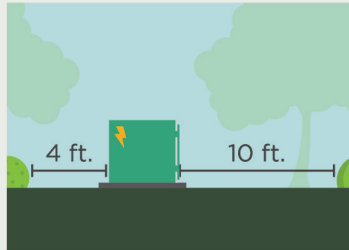
# 3 Ways to Help Limit Tree Trimming

Did you know electric utilities are required to trim trees and other types of vegetation that grow too close to overhead power lines? We know you love your trees, and we will do everything we can to avoid trimming them. Here's how you can help:

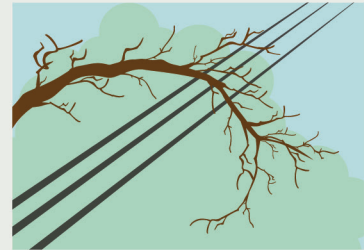
**1. Plant trees in the right place.** Trees that will be <40 ft. should be planted at least 25 ft. away from power lines (>40ft. should be at least 50 ft. away).



**2. Don't block pad-mounted transformers.** Plant shrubs at least 10 ft. away from transformer doors and 4 ft. from transformer sides.



**3. Report dangerous branches.** If you spot a tree or branch that is dangerously close to power lines, please let us know.



**Trimming improves safety for all.  
Let's work together to enjoy the beauty of trees and reliable electricity.**

## ELECTRALITE CLASSIFIED ADS

Classified Ads Must be Submitted to

<https://www.mycvec.coop/submit-an-ad>

Ads must be received by the first of each month



### AUTOMOBILES & BIKES

### HOME & LAND

### FARM & RANCH

Small, square bales of good, clean prairie grass hay, stored in barn, good for horses, \$7/bale, 405-598-5860.

### MISCELLANEOUS

Mini Aussie puppies, born 10/26/23, being raised around farm animals and kids, text (918) 290-8250 for more info and pictures.



Our *Energize Oklahoma* podcast is taking a break for a few months. Look for it to return later this year!

## ENERGY EFFICIENCY TIP OF THE MONTH

Lengthen the life of your clothes dryer with regular cleaning. Clean the lint filter after every load, which improves air circulation and safety. Check the lint trap opening to ensure it's clean. Use a vacuum to remove any lint that's fallen inside the opening.

If you use dryer sheets, check the lint filter for residue buildup. Remove any residue with hot water and a nylon brush or toothbrush. Over time, dryer sheets can leave a film on the filter, which can affect the performance of the motor.

